

GILIMEX
INDUSTRIAL PARK

THE LEADING SMART & GREEN
INDUSTRIAL PARK DEVELOPER IN VIETNAM



GILIMEX
INDUSTRIAL PARK

GILIMEX INDUSTRIAL PARK CORPORATION

Headquarters

- 📍 45 Nguyen Hue Street, Vinh Ninh Ward,
Thuan Hoa District, Hue City
- ☎ (+84 234) 388 9996

Representative offices

- 📍 Harbour View Tower, Room 11.01, 35 Nguyen Hue Street,
Ben Nghe Ward, District 1, Ho Chi Minh City
- 📍 S6B - 01 S03, Vinhomes Symphony, Phuc Loi Ward,
Long Bien District, Hanoi City

🌐 www.gilimexip.com ☎ (+84) 988816868



Gilimex Hue IP Location

**GILIMEX HUE
INDUSTRIAL PARK**



Founded in November 2019, Gilimex Industrial Park Corporation is the Developer of the 460-hectare Gilimex Hue Industrial Park and a growing network of sustainable, modern industrial parks across Vietnam.

Gilimex Hue Industrial Park, located in Huong Thuy Town, Hue City with its founding shareholder as Binh Thanh Import-Export Production and Trade Joint Stock Company. The Industrial Park is developed towards the Green Industry, Eco-friendly Industry, and Advanced Technology with the synchronous infrastructure to attract local and international investors. Gilimex Industrial Park is committed to concentrating on investment in an integrated infrastructure and landscape, as well as, constant innovation to preserve sustainability and deliver the greatest benefits to each investor who chooses Gilimex Industrial Park as their destination.

GILIMEX INDUSTRIAL PARK



Oriented to be the developer of eco-friendly industrial parks with the most modern and advanced technologies in the region, meet the requirements of welcoming, positive and friendly working environment and focusing on improving the quality of life of Vietnamese people and sustainable development standards for the future of Vietnam.



With our utmost responsibility for the sustainable development of Vietnam in the future, we are committed to providing the community with the international standard, professional and green industrial park.



THUAN THANH III - C IP
Total investment capital: **USD 80 million**
Land handover: Expected **Q2/2026**

NGHIA HUNG IP
Total investment capital: **USD 100 million**
Land handover: Expected **Q1/2026**

GILIMEX IP HUE
Total investment capital: **USD 120 million**
Status: **Ready for handover**

GILIMEX IP QUANG NGAI
Total investment capital: **USD 200 million**
Land handover: Expected **Q2/2027**

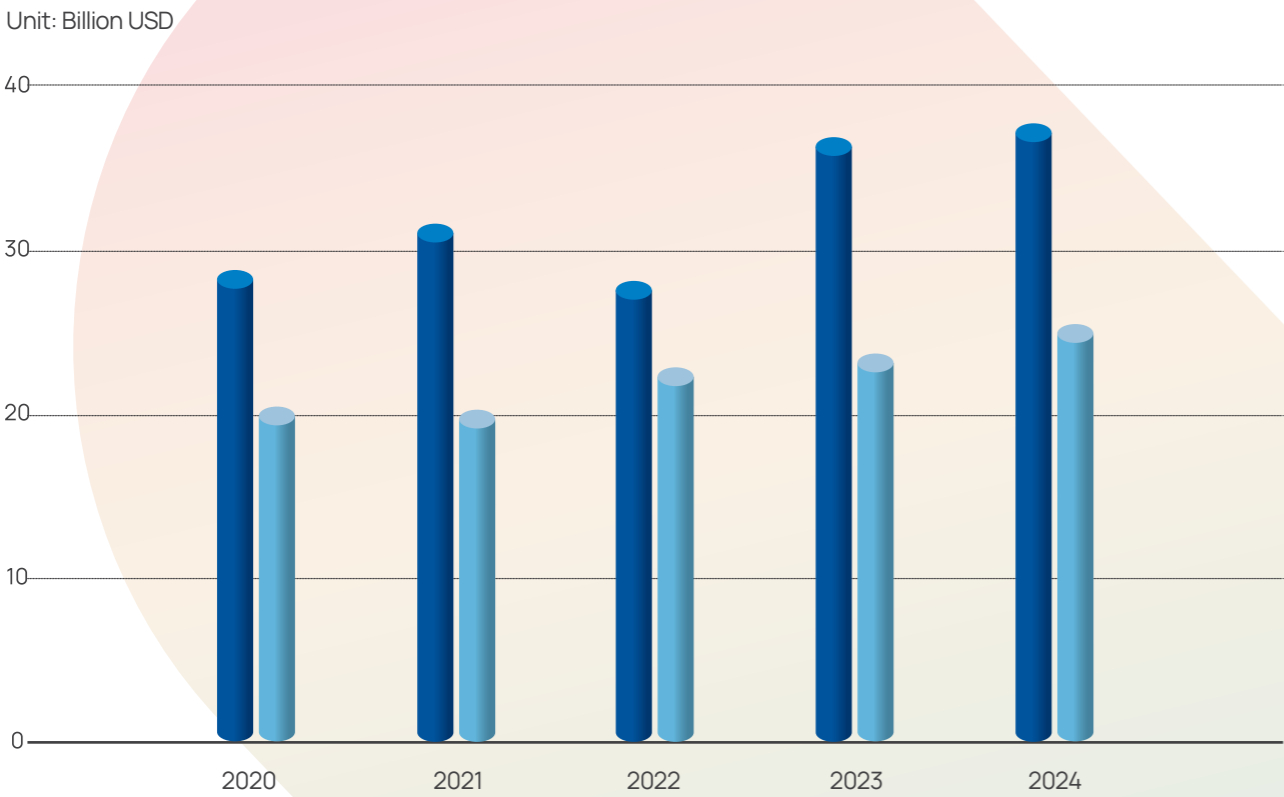
GILIMEX IP VINH LONG
Total investment capital: **USD 220 million**
Land handover: Expected **Q4/2026**

GILIMEX IP DONG THAP
Total investment capital: **USD 250 million**
Land handover: Expected **Q3/2026**

TRUONG SA

OVERVIEW OF VIETNAM

FDI ATTRACTION FROM 2020 TO 2024 Registered capital Disbursed capital



AREA
331,690 km²

CAPITAL
Hanoi

POPULATION
101.1 million people

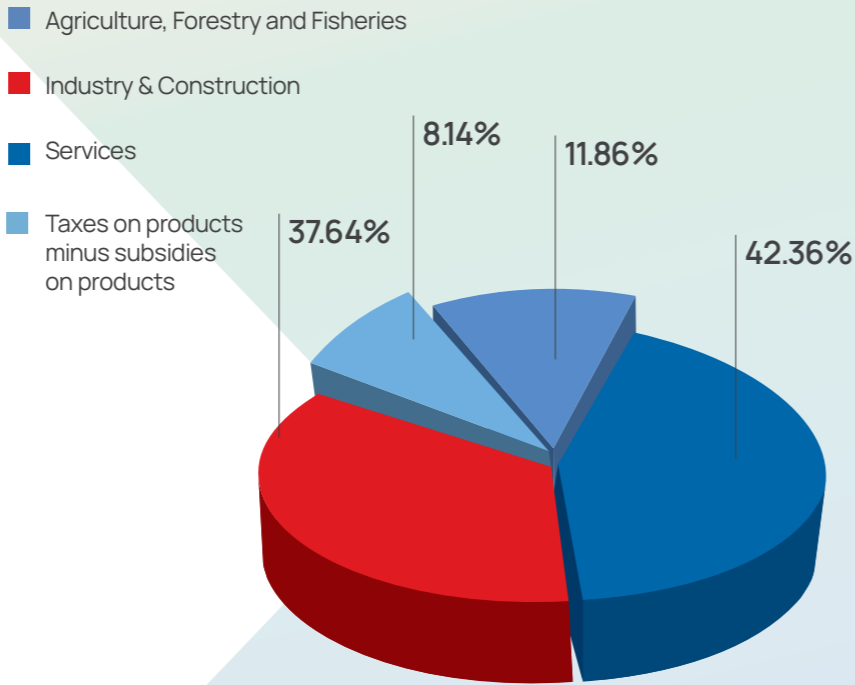
MEDIAN AGE
32.9 years old

LABOR FORCE
53.2 million people

GDP
USD 476.3 billion

GDP PER CAPITA
USD/person 4,700

ECONOMIC STRUCTURE



Source: 2024 statistics according to the General Statistics Office

OVERVIEW OF HUE CITY

“ Hue City is a centrally governed city of Vietnam, located in the Central Key Economic Region, which has strong advantages in developing trade & commerce activities locally and internationally.



AREA
4,947.11 km²

POPULATION
1.24 million people

WORKING FORCE
55 %

FDI CAPITAL IN 2024
USD 141.7 million

PROVINCIAL COMPETITIVENESS INDEX (PCI)
RANKED 6/63

PROPORTION OF INDUSTRY AND CONSTRUCTION
29.9 % of GDP

GDP PER CAPITA
USD/person 2,890

- Hue is the sixth centrally governed city of Vietnam provinces and cities in the Central Vietnam Economic Zone.
- Located on the major traffic route with Thuan An port and Chan May deep-water seaports, which serve the whole Central Region, Central Highlands, and Mekong Sub-Region.
- Share the 86 km border with Laos, and serve as the gateway to the East-West Economic Corridor that connects Myanmar, Thailand, and Laos to the Eastern Vietnam coasts.
- Gilimex Hue IP is located on National Highway 1A, directly opposite Phu Bai International Airport and next to the North-South railway line that connects key provinces across Vietnam.

GILIMEX HUE
INDUSTRIAL PARK



Gilimex Hue Industrial Park is strategically located along major traffic routes, expressways of Vietnam, and especially, the East-West Economic Corridor (EWEC). This prime location provides investors with significant benefits, including reduced transportation time and costs, and seamless connectivity to major cities in the Central region.

Total area

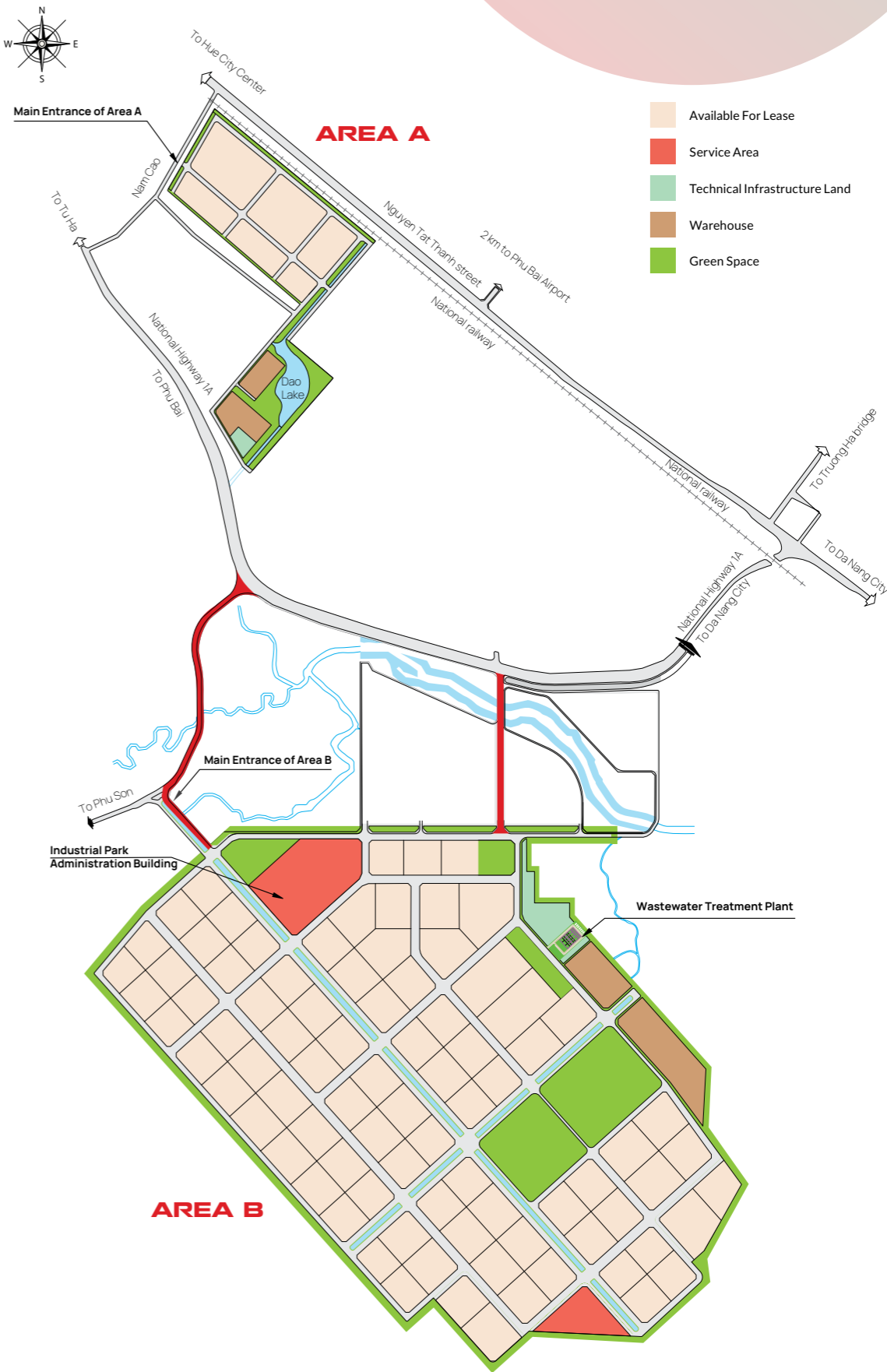
~460.85 ha

Area A: 49.17 ha

Area B: 411.68 ha

- Located along National Highway 1A
- Connected with Cam Lo – La Son – Tuy Loan Expressway
- Being the start point of East - West Economic Corridor
- 50 km away from Chan May Port
- 80 km away from Da Nang City Center
- 80 km away from Tien Sa Int'l Port
- 170 km away from Lao Bao Border Gate

MASTER PLAN OF
GILIMEX HUE
INDUSTRIAL PARK

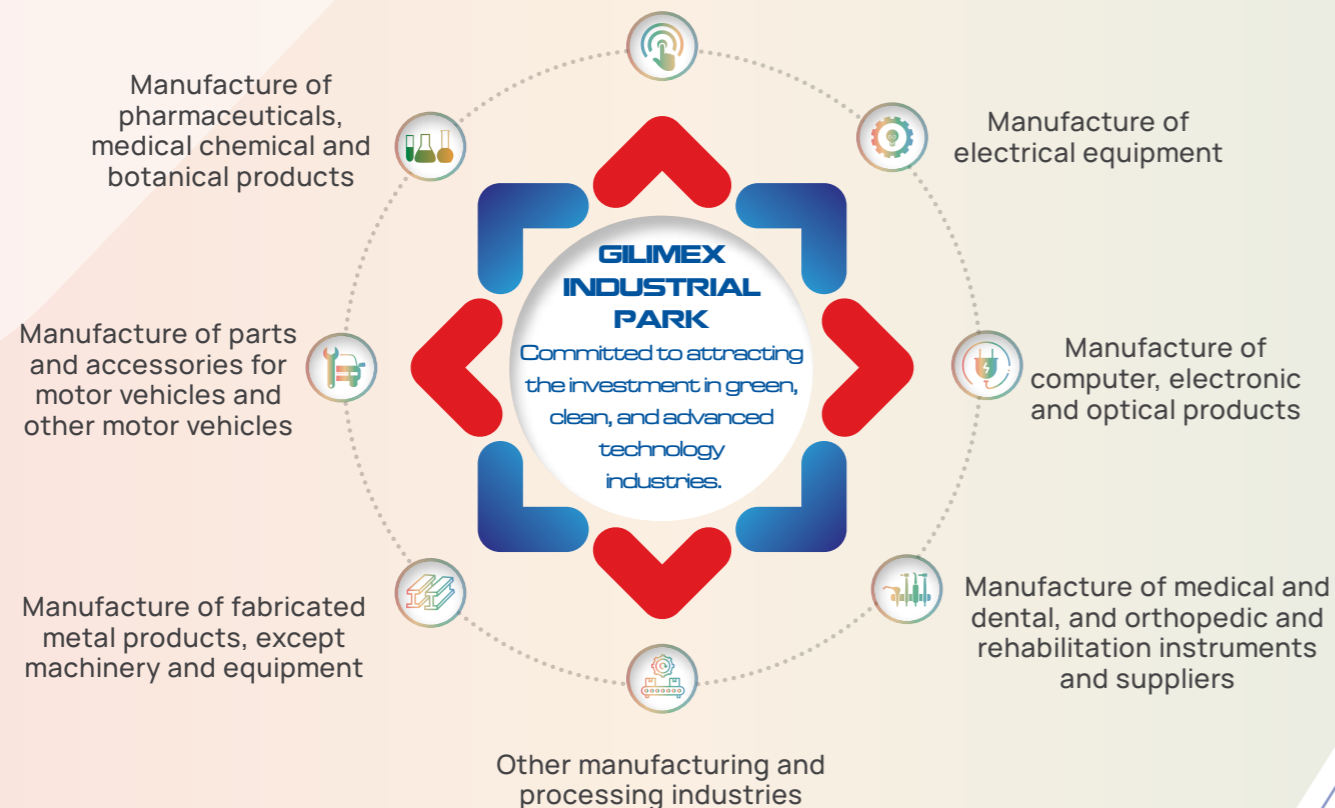


INTEGRATED INFRASTRUCTURE

POWER SUPPLY	WATER SUPPLY	SEWAGE TREATMENT SYSTEM
80 MVA	10,000 m ³ /day	Capacity: 7,600 m ³ /day Phase 1: 3,800 m ³ /day
TOTAL LENGTH OF INTERNAL ROADS IN THE INDUSTRIAL PARK	WIDTH OF MAIN ROADS	SMALLEST WIDTH OF ROADS
25 km	61.5 m	19.5 m
TOTAL NUMBER OF TREES PLANTED ALONG THE ROAD AND CENTER DIVIDER	AREA	TELECOMMUNICATIONS
10,000 trees	256,000 m ²	1,614 fiber optic lines 30,000 m of telecommunication conduits 6 Base Transceiver Stations (BTS)

TARGET INDUSTRIES

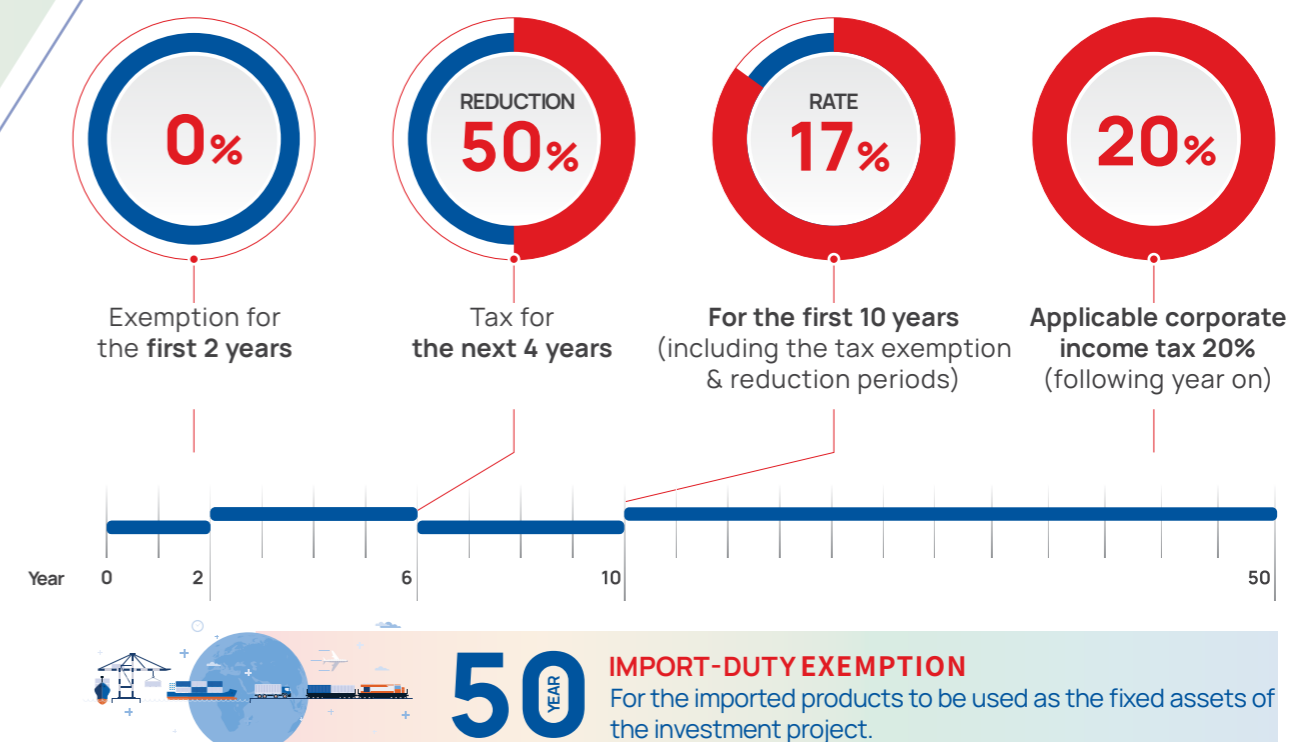
Scientific research and
development



ONE-STOP SERVICES

LEGAL ADMINISTRATIVE ASSISTANCE	CUSTOMER SERVICES	ESTATE MANAGEMENT
<ul style="list-style-type: none"> ➤ Applying for the approval of investment policy & investment certificate - IRC & ERC. ➤ Applying for work permits, construction permits, environmental impact assessment (EIA) reports,... ➤ Carrying out other administrative procedures and customs formalities. 	<ul style="list-style-type: none"> ➤ Assisting in preparing and submitting the application for the company incorporation in Vietnam. ➤ Guiding and assisting the factory/company setting up in the early stages. ➤ Assisting in daily operational activities. ➤ Connecting businesses in the industrial park and around the area. 	<ul style="list-style-type: none"> ➤ Manage items of general technical infrastructure, utilities, and industrial park landscape. ➤ 24/7 industrial park security service. ➤ Waste collection and cleaning of common areas. ➤ 24/7 fire prevention.

INVESTMENT INCENTIVE POLICY OF HUE CITY





A Green - Smart - Modern & Advanced Industrial Park
designed to meet investors' diverse demands.

GILIMEX HUE INDUSTRIAL PARK

